

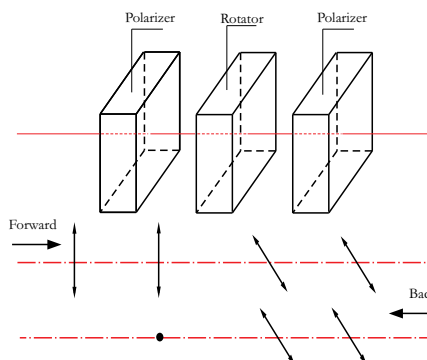
Free Space Isolator

Features:

- High Isolation
- Low Insertion Loss
- Compact Size
- Environmentally Stable

Applications:

- Fiber Laser
- Tunable Laser
- Optical Transmitters



Specifications:

Parameter	Unit	Single Stage		Dual Stage	
		A	B	A	B
Grade		A	B	A	B
Central Wavelength (λ_c)	nm	1310, 1550			
Peak Isolation	dB	42	40	58	55
Isolation ($\lambda_c \pm 25$ nm, 23 °C)	Min. dB	28	27	48	46
Insertion Loss (λ_c , 23 °C)	Max. dB	0.15	0.20	0.25	0.30
Insertion Loss ($\lambda_c \pm 25$ nm, 23 °C)	Max. dB	0.25	0.30	0.40	0.45
Clear Aperture	mm	$(\phi)0.9$			
O.D. ¹	mm	3.00 \pm 0.05			
L ¹	mm	4.0 \pm 0.1			
Power Handling	Max. mW	1,000			
Operating Temperature	°C	0~70			
Storage Temperature	°C	-40~85			

1. Other dimensions are also available upon request.
 Note: OEM products with different specifications are also available.

Dimension:

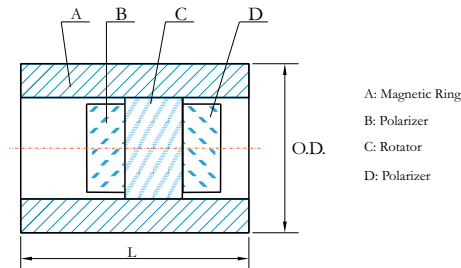


Figure 1. Free Space Isolator

Order Information:

KFSI - $\frac{X}{A}$ - $\frac{X}{B}$ - $\frac{XXXX}{C}$

A	Grade	A=Grade "A"
		B=Grade "B"
		S=Custom
B	Type	S=Single stage
		D=Dual stage
C	Wavelength	1310=1310 nm
		1550=1550 nm