

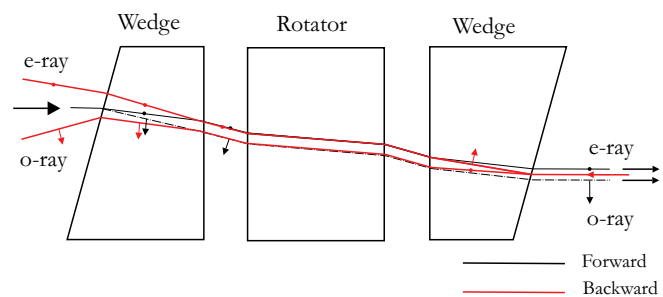
Isolator Core

Features:

- Wide Operating Wavelength & Temperature Range
- Low Insertion Loss & High Isolation
- Low PDL & PMD

Applications:

- Isolator
- Laser Module
- Integrated Device



Specifications¹:

| Parameter | Unit | Single Stage | PMD Compensated | Dual Stage |
|--|---------|-----------------|------------------|------------------|
| Central Wavelength (λ_c) | nm | | 1310, 1550, 1590 | |
| Peak Isolation (23 °C, All SOP) | Min. dB | 42 | 42 | 56 |
| Isolation ($\lambda_c \pm 15$ nm, 23 °C, All SOP) | Min. dB | 32 ² | 32 ² | 46 |
| Insertion Loss (λ_c , 23 °C, All SOP) | Max. dB | 0.12 | 0.15 | 0.25 |
| PDL | Max. dB | 0.05 | 0.05 | 0.05 |
| PMD | Max. ps | 0.20 | 0.05 | 0.05 |
| O.D. | mm | | 3.00 \pm 0.05 | |
| I.D. | mm | | 1.81 \pm 0.01 | |
| L1 | mm | 4.0 | 4.0 | 5.0 ³ |
| Clear Aperture | Min. mm | | (ϕ)0.8 | |

1. SOP=State of Polarization.

2. Isolation is 31dB for 1310nm

3. Length 4mm for 1310

Note: OEM products with different specifications are also available.

Dimension:

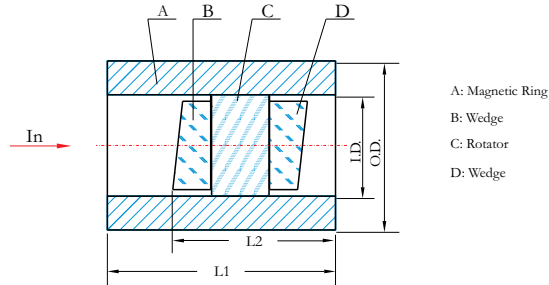


Figure 1. Isolator Core

Order Information:

KISC - $\frac{X}{A}$ - $\frac{X}{B}$ - $\frac{XXXX}{C}$

| | | |
|---|------------|-------------------|
| A | Grade | A= Grade "A" |
| | | S= Custom |
| B | Type | S=Single stage |
| | | C=PMD compensated |
| | | D=Dual stage |
| C | Wavelength | 1310=1310 nm |
| | | 1550=1550 nm |
| | | 1590=1590 nm |